



CONTENTS

1.0	THE PROPOSAL.....	2
	<i>Introduction</i>	2
	<i>Project Description</i>	2
2.0	THE APPLICANT	3
3.0	OUR APPROACH TO COMMUNITY CONSULTATION.....	3
4.0	LEGISLATIVE REQUIREMENTS.....	4
5.0	THE CONSULTATION PROCESS	5
6.0	EVALUATION THE CONSULTATION PROCESS	9
	<i>10 National Standards for Community Engagement Evaluation</i>	9
	<i>SP=EED (Scottish Planning = Effective Engagement and Delivery Evaluation</i>	10
7.0	COMMENTS AND FEEDBACK.....	12
8.0	SUMMARY	15
9.0	APPENDICES	16
	<i>Stakeholder Information Meeting Invitation</i>	17
	<i>Newsletter - March 2014</i>	20
	<i>Newsletter - October 2014</i>	23
	<i>Exhibition 1 (March 2014) - Newspaper Advert</i>	26
	<i>Exhibition 2 (October 2014) - Newspaper Advert</i>	28
	<i>Exhibition 1 (March 2014) - Questionnaire</i>	30
	<i>Exhibition 2 (October 2014) - Questionnaire</i>	33
	<i>Analysis of Exhibition Questionnaires (March 2014)</i>	36
	<i>Analysis of Exhibition Questionnaires (October 2014)</i>	40
	<i>Summary of Comments from Exhibition Questionnaires - March 2014</i>	44
	<i>Summary of Comments from Exhibition Questionnaires - October 2014</i>	47

1.0 THE PROPOSAL

Introduction

This 'Pre-Application Consultation Report' (PAC Report), relates to a planning application made by RES for Culachy Wind Farm. This document details and reports on the consultation process undertaken by RES.

RES has served this document to the following parties:

- The Highland Council;
- Fort Augustus and Glenmoriston Community Council;
- Glengarry Community Council.

An electronic version of this document and the Non-Technical Summary are available for download at www.culachy-windfarm.co.uk. This document, the full Environmental Statement (ES) and associated document will be available for viewing during their normal opening hours at the following locations:

Location Name	Normal Opening Hours	Address
The Highland Council - Inverness Area Office	09:00 to 17:00, Monday to Friday	2nd Floor Kintail House Beechwood Business Park Inverness IV2 3BW
The Highland Council Fort Augustus Service Point	9:30 to 13:00, Monday to Friday	Memorial Hall, Fort Augustus, PH32 4DJ

Copies of the ES and associated documents have been provided to Fort Augustus and Glenmoriston Community Council and Glengarry Community Council.

Project Description

As set out in the Schedule, Regulation 2(1) of the Town and Country Planning (Hierarchy of Development) (Scotland) Regulations 2009, the proposed development is defined as a 'Major Development', as the capacity is, or exceeds 20 megawatts.

Planning permission is being sought for a wind farm development comprising the following:

- 13 three-bladed horizontal axis wind turbines, with 12 up to 149.5 m tip-height and 1 up to 132 m tip-height, nominally rated at 3.4 MW;
- Turbine foundations;
- Hard-standing areas at each turbine location for use by the cranes erecting and maintaining the turbine;
- A single, permanent lattice wind monitoring (anemometer) mast and a communications mast;
- 4 temporary guyed lattice calibration and power performance masts with associated hardstandings and track spurs;
- A wind farm substation building and compound;
- A wind farm control building, compound and communications mast;

- A network of underground (buried) on-site electrical control cables;
- A connection from the substation to the local grid network (not part of the wind farm planning application but considered in Chapter 2: Project Description, Volume II: Environmental Statement);
- Site access tracks and turning points;
- A temporary construction compound;
- A temporary gate house compound;
- A temporary concrete batching plant;
- Temporary welfare facilities;
- 3 borrow pit search areas;
- Drainage works;
- Associated ancillary works; and
- Engineering operations.

RES initially scoped Culachy Wind Farm with the Scottish Government under Section 36 of the Electricity Act 1989. Subsequently the project reduced in size to below 50 megawatts and as set out in the Schedule, Regulation 2(1) of the Town and Country Planning (Hierarchy of Development) (Scotland) Regulations 2009, Culachy Wind Farm is defined as a Major Development, as the capacity is, or exceeds 20 megawatts.

This Pre-Application Consultation Report captures all the consultation RES has undertaken to date with regards to Culachy Wind Farm, including consultation on the project prior to the reduction in size.

2.0 THE APPLICANT

RES is one of the world's leading independent renewable energy developers with operations across Europe, the Americas and Asia-Pacific. RES, a British company, has been at the forefront of wind energy development since the 1970s and has developed and/or built 135 wind farms (8 Gigawatts (GW) of wind capacity) worldwide. In the UK alone RES currently has more than 1,000 MW of wind energy either constructed, under construction or consented. In Scotland, RES has developed and/or built eleven wind farms with a total generation capacity of nearly 215 MW. In 2013, RES completed construction of Meikle Carewe Wind Farm in Aberdeenshire.

Drawing on decades of experience in the renewable energy and construction industries, RES has the expertise to develop, construct and operate projects of outstanding quality. From its Glasgow Office RES has been developing, constructing and operating wind farms in Scotland since 1993. RES has a growing team of over 117 staff in Scotland, working across a range of disciplines

3.0 OUR APPROACH TO COMMUNITY CONSULTATION

RES is experienced in wind energy project development and community consultation is an integral part of the process. A comprehensive process that engages with local people and stakeholders at an early stage allows an informed debate that helps us identify issues of concerns, explore solutions and design a low-impact project that will be welcomed as a positive asset by the local community.

As outlined in Section 1.0 of this report, the proposed development constitutes a 'Major Development', as the proposed capacity is, or exceeds 20 megawatts. This requires the applicant to

carry out Pre-Application Consultation (PAC) with the local community and submit a PAC report with the planning application. This document fulfils this requirement. As a prerequisite, an applicant must provide a Proposal of Application Notice (PAN) setting out how it intends to carry out consultation and engage with the community local to its proposed development. RES submitted a PAN to The Highland Council (THC) on 5th September 2014 and received confirmation that this satisfied the relevant requirements. The PAN was sent to Fort Augustus and Glenmoriston Community Council and Glengarry Community Council on 5th September 2014.

Best practice guidance exists in Scotland on community engagement, with the most notable being PAN 3/2010 - Community Engagement. RES used the 10 National Standards for Community Engagement as set out in PAN 3/2010 to plan, monitor and evaluate the consultation process. In addition RES, also used SP=EED (Scottish Planning = Effective Engagement and Delivery) derived from PAN 3/2010 to effectively audit and review the consultation process.

RES worked closely with The Highland Council to identify stakeholders, drawing on their knowledge to build up a good understanding of the community. We aimed to include all sectors of the community in the engagement process.

4.0 LEGISLATIVE REQUIREMENTS

As set out in The Planning etc. (Scotland) Act 2006; the minimum consultation activity (Regulation 7) states that an applicant must consult with community councils and hold a public event. RES believes that meaningful and productive consultation requires a more detailed approach, in undertaking the consultation for the proposed development RES has gone above and beyond the minimum statutory requirement.

As per Part 2, 7 (1) Town and Country Planning (Development Management Procedure) (Scotland) Regulations 2008:

“The prospective applicant is to consult as respects a proposed application every community council any part of whose area is within or adjoins the land where the proposed development is situated and in doing so is to give a copy of the proposed of application notice to such community council.”

Culachy Wind Farm is located in Fort Augustus and Glenmoriston Community Council area and the southwest extent of the site boundary adjoins Glengarry Community Council area.

At all stages of the consultation process RES set out clearly the purpose of the consultation. Throughout the process RES emphasised that comments made are not representations to the planning authority and that there would be the opportunity for representations to be made to the planning authority, once a planning application is submitted.

5.0 THE CONSULTATION PROCESS

RES used a variety of methods to consult with the local community. Information about each activity undertaken can be found in the table below.

ACTIVITY	INFORMATION	DATE
Meeting with The Highland Council (THC)	RES met with THC prior to submitting a PAN to discuss the consultation plans on 19 th February 2014 and 21 st August 2014. As per 2.15 of Circular 4/2009 - Development Management Procedures, RES requested a list of bodies with whom to engage with; Fort Augustus and Glenmoriston Community Council, Glengarry Community Council.	February 2014 - ongoing
Initial Briefings	<p>RES ensured the following stakeholders were briefed about the proposed development and consultation process by writing to them to introduce the company and proposal:</p> <ul style="list-style-type: none"> • Relevant Community Councils: Fort Augustus and Glenmoriston Community Council and Glengarry Community Council; • Local ward councillors for Aird and Loch Ness; • Other interested groups: South Loch Ness Access Group, Visit Loch Ness (Destination Loch Ness), Fort Augustus Glenmoriston Glengarry Business Initiative and Fort Augustus and Glenmoriston Community Company; <p>The above stakeholders were all invited to an initial meeting with RES on 9th December 2013 at the Lovat Hotel in Fort Augustus.</p>	November 2013 - ongoing
Community Council Meetings	<p>RES sought to arrange meetings with representatives of the two community councils. The aim of these meetings was to:</p> <ul style="list-style-type: none"> • Introduce RES and the project team; • Provide brief details on the proposal, including why we were proposing a wind farm at this location; and • Discuss the proposed consultation plan and seek feedback on the methods of consultation proposed. <p>RES wrote to the following community councils to arrange meetings: Fort Augustus and Glenmoriston Community Council and Glengarry Community Council.</p> <p>RES has met with Fort Augustus and Glenmoriston Community Council on 27th March 2014 and 30th October 2014. RES has been unable to arrange a meeting with Glengarry Community Council. However, they have been provided with written updates on the proposal and copies of all the relevant consultation documents. In addition, all residents from the community council area were invited to both exhibitions.</p>	November 2013 - ongoing
Public Exhibitions	<p>RES held the following public exhibitions:</p> <ul style="list-style-type: none"> • 18th March 2014 - Fort Augustus Village Hall, 3pm - 7pm; and • 22nd October 2014 - Fort Augustus Village Hall, 3pm - 8pm. <p>The public exhibitions provided a forum to share information about the development. This included maps and plans detailing the proposal, the results of the surveys undertaken and potential access routes proposed. Local residents had the opportunity to meet the development team, find out information, ask questions and leave comments on the proposal. The public exhibitions were held in venues that were accessible to everyone in the community.</p>	<p>18th March 2014</p> <p>22nd October 2014</p>

ACTIVITY	INFORMATION	DATE
	<p>All those who attended the exhibitions were asked to complete a questionnaire.</p> <p>Exhibition 1 - 18th March 2014</p> <p>Eighty-six people attended the exhibition. Those who attended the exhibitions were invited to complete a questionnaire.</p> <p>Summary of questionnaire data:</p> <ul style="list-style-type: none"> • Forty-five people filled out a questionnaire; • Thirty-nine respondents found about the exhibition via the letter RES sent, one person saw the advert in the Inverness Courier, one person found out via the website, one person stated they had seen a poster, one person stated through word-of-mouth and two people did not respond; • Before coming to the exhibitions, two people said they knew ‘a lot’, five people said they knew ‘quite a lot’, 15 people said they knew ‘a little’, 12 people said they knew ‘very little’, 11 people said they did not know ‘anything at all’ about the proposed development and one person did not respond; • Seven people felt that having attended the exhibitions their understanding and information about the proposed wind farm had been increased ‘a lot’, 18 people felt ‘quite a lot’, 11 people said ‘a little’, three people said ‘very little’, four people stated ‘not at all’ and two people did not respond; • When asked “Which part of the exhibition did you find most useful today?” 18 people stated the exhibition boards, nine people said the photomontages, 12 people felt it was the ability to ask RES questions and provide feedback to the project team, three people stated ‘other’ and three people did not respond; • When asked “What do you think of the layout of Culachy Wind Farm?” three people stated ‘I am happy with the proposed layout’, six people said ‘I am neutral towards the current proposed layout’, 14 people stated ‘I have concerns about the proposed layout’ and 18 people stated ‘I don’t like wind farms in general’ and four people did not respond. Of the 14 people who stated that they had concerns about the proposed layout, only eight went on to leave comments. <p>The exhibitions were advertised on Tuesday 11th and Friday 14th March 2014.</p> <p>The adverts included:</p> <ul style="list-style-type: none"> • a description and location of the proposed development; • where to obtain further information; • date, time and place of the exhibitions; <p>Exhibition 2 - 22nd October 2014</p> <p>Thirty-six people attended the exhibition. Those who attended the exhibitions were invited to complete a questionnaire.</p> <p>Summary of questionnaire data:</p> <ul style="list-style-type: none"> • Seventeen people filled out a questionnaire; • Fourteen respondents found about the exhibition via the newsletter RES sent, two people saw the advert in the Inverness Courier and one person saw the 	

ACTIVITY	INFORMATION	DATE
	<p>advert in the Press and Journal;</p> <ul style="list-style-type: none"> • Before coming to the exhibitions, three people said they knew ‘a lot’, seven people said they knew ‘quite a lot’, five people said they knew ‘a little’ and two people said they knew ‘very little’ about the proposed development; • Two people felt that having attended the exhibitions their understanding and information about the proposed wind farm had been increased ‘a lot’, 10 people felt ‘quite a lot’, four people said ‘a little’ and one person said ‘very little’; • When asked “Which part of the exhibition did you find most useful today?” two people stated the exhibition boards, five people said the photomontages, 13 people felt it was the ability to ask RES questions and provide feedback to the project team and one person stated ‘other’. Some respondents ticked more than one answer; • When asked “What do you think about the revised proposed layout of Culachy Wind Farm?” seven people stated ‘I am happy with the revised layout’, three people said ‘I am neutral towards the current proposed layout’, two people stated ‘I have concerns about the proposed layout’, four people stated ‘I don’t like wind farms in general’ and three people did not respond. One person indicated that they were ‘happy with the revised layout’ and also ticked the box indicating that they ‘don’t link wind farms in general’. Another person indicated that they were ‘neutral towards the revised layout’ and also ticked the box indicating that they ‘don’t link wind farms in general’. <p>The exhibitions were advertised on Tuesday 14th and Tuesday 21st October 2014 in the Inverness Courier and Monday 13th and Monday 20th October 2014 in the Press and Journal.</p> <p>The adverts included:</p> <ul style="list-style-type: none"> • a description and location of the proposed development; • where to obtain further information; • date, time and place of the exhibitions; • a statement explaining how and by when comments to RES on the proposal should be made; and • a statement explaining that comments made to RES are not representations to the planning authority and that these can be made once a planning application has been submitted. <p>A summary of the comments raised and our response can be found in Section 7.0.</p> <p>Exhibition advert, exhibition letter and questionnaires can be found in Section 9.0.</p>	
<p>Newsletters</p>	<p>A letter inviting residents to the first exhibition (March 2014) and a newsletter inviting residents to the second exhibition (October 2014) were sent out to 1123 houses and businesses in the following community council areas: Fort Augustus and Glenmoriston Community Council and Glengarry Community Council. RES provided the opportunity to access the information in alternative formats such as Braille, large text and audio. A copy of the newsletter can be found in Section 9.0.</p> <p>A third newsletter will be sent out to the same distribution list after the submission of the planning application. The newsletter will provide details on how local residents can make representations to The Highland Council and where people can view the Environmental Statement and accompanying Non-Technical Summary.</p>	<p>March 2014 - ongoing</p>

ACTIVITY	INFORMATION	DATE
Emails/Letters	In addition, RES has provided written responses to anyone who submitted comments as part of the consultation process. A summary of the comments raised and our response can be found in Section 7.0 .	November 2013 - ongoing
Questionnaires	<p>Local residents were given numerous avenues and opportunities to provide comments on the proposal, these included:</p> <ol style="list-style-type: none"> 1. Section on community consultation in the newsletter and details on how to submit comments; 2. Details contained within the newspaper adverts on how to submit comments; and 3. A questionnaire at the public exhibitions; <p>At all times it was clearly stated that comments made were not representations to the planning authority. The deadline for receiving comments was also communicated. Specific details on questionnaires undertaken are included in relevant sections of this table.</p> <p>A summary of the comments raised and our response can be found in Section 7.0.</p>	November 2013 - November 2014
Website	RES has created a dedicated project website www.culachy-windfarm.co.uk . This provides information about the proposed development, news and information on the consultation process. The website has been updated as the consultation process has progressed.	November 2013 - ongoing

6.0 EVALUATION THE CONSULTATION PROCESS

Best practice guidance exists in Scotland on community engagement, with the most notable being PAN 3/2010 - Community Engagement. The next two tables evaluate the consultation process using the 10 National Standards for Community Engagement as set out in PAN 3/2010 and SP=EED (Scottish Planning = Effective Engagement and Delivery). We have included examples to demonstrate how we have achieved the level and standard.

10 National Standards for Community Engagement Evaluation

THE STANDARD	DESCRIPTION	EXAMPLES OF HOW RES HAS ACHIEVED THIS
1. INVOLVEMENT	Identify and involve the people and organizations who have an interest in the focus of engagement.	RES identified key stakeholders and agreed with The Highland Council a list of those stakeholders with whom to engage with.
2. SUPPORT	Identify and overcome any barriers to involvement.	Throughout the consultation process RES understood the need to help all individuals and groups engage. The opportunity was provided to access the information in alternative formats such as Braille, large text and audio. The public exhibitions were held in venues that were accessible to everyone in the community. The public exhibitions were deliberately arranged to avoid the school holidays.
3. PLANNING	Gather evidence of need and resources to agree purpose, scope and actions.	RES clearly set out the methods to be used for engagement in the Proposal of Application Notice. The engagement process took place over many months with the local community as the project developed and clearly set out what the purpose and scope of the engagement was.
4. METHODS	Agree and use methods of engagement that are fit for purpose.	RES used a variety of methods to consult including meetings, public exhibitions, newsletter, website and questionnaires to engage with the local community. The methods were agreed with The Highland Council and details provided to the relevant community councils.
5. WORKING TOGETHER	Agree and use clear procedures that enable participants to work together effectively and efficiently.	The Community Relations Manager and Development Project Manager undertook the community engagement with assistance from technical specialists where appropriate; contact details for both staff were made publically available. We responded to all comments in a timely manner and, where appropriate, arranged meetings to discuss any concerns face-to-face.
6. SHARING INFORMATION	Ensure necessary information is communicated between the participants.	RES provided the opportunity to access the information in alternative formats such as Braille, large text and audio. A variety of mediums including newsletters, letters, press releases and website were used to communicate information about the project and the consultation process.
7. WORKING WITH OTHERS	Work effectively with others with an interest.	RES engaged with the community councils early in the process to explain the plan for community consultation and seek their feedback. RES invited local interest groups to an initial meeting at the start of the development process.
8. IMPROVEMENT	Develop skills, knowledge and confidence of the participants	RES ensured that the Community Relations Manager and the Project Manager involved in the consultation process were trained in 'Public and Stakeholder Engagement', 'Negotiation Skills' and 'Conflict Resolution'.

THE STANDARD	DESCRIPTION	EXAMPLES OF HOW RES HAS ACHIEVED THIS
9. FEEDBACK	Feed results back to the wider community and agencies affected.	Using the PAC report, website, RES has ensured that the findings of the consultation process have been presented with transparency and integrity.
10. MONITORING AND EVALUATION	Monitor and evaluate whether engagement achieves its purpose and meets the national standard for community engagement.	RES has constantly monitored the consultation process. We have evaluated the consultation process using the 10 National Standards for Community Engagement as set out in PAN 3/2010. In addition RES used SP=EED (Scottish Planning = Effective Engagement and Delivery) derived from PAN 3/210 to audit the consultation process.

SP=EED (Scottish Planning = Effective Engagement and Delivery Evaluation)

SP=EED	LEVEL ACHIEVED	EXAMPLES OF HOW RES HAS ACHIEVED THIS
TRANSPARENCY & INTEGRITY	Level 3 - There will be dialogue with communities and key stakeholders to agree on how the community engagement will operate and how inputs from participants will be used.	RES engaged in a dialogue with the local community councils to discuss the proposed engagement process. We were clear on what the scope and purpose of the consultation process. RES sought to meet with the community councils, and where this was not possible made sure they were kept updated via letter and email on the progress of the project and consultation process.
TIME AND RESOURCES	Level 2 - A timetable will be published and followed that includes adequate periods set aside for meetings and discussions with respondents.	RES consulted on the timetable for consultation with The Highland Council and the relevant community councils. We deliberately arranged the public exhibitions so they avoided the school holidays. RES communicated the deadline for comments to be received on the website, in the newsletter, in newspaper adverts and at the exhibitions.
INFORMATION	Level 2- Information that is relevant to the development plan or proposal will be communicated and shared between all participants.	RES ensured all information was available in a timely manner and was clearly presented. We have kept the community informed as the consultation process has progressed.
COORDINATION	Level 2 - There will be a coordinated approach that avoids 'consultation fatigue'.	RES engaged all the relevant stakeholders in the consultation process. We have engaged in a dialogue with the local community councils to discuss the proposed engagement process.
RESPONSIVE	Level 2 - Responses will be analysed and the findings will be reported back to all the stakeholders, with an indication of how proposals have been changed as a result of matters raised during the consultation.	RES set out in the PAN: When working with stakeholders, RES will listen, respond in a timely manner and, where appropriate either adapt the proposal or mitigate in response to the issues raised. Where this is not appropriate, RES will explain why. A summary of the comments raised and our responses can be found in Section 7.0 .
ACCESSIBLE AND APPROPRIATE	Level 2 - The methods used to consult people will be appropriate to the situation so that people with an interest can have a say. There will always be opportunities to discuss the plans or proposals with professional staff, and submit responses by letter, phone, e-mail or personal contact.	The Community Relations Manager and Project Manager led the community engagement with assistance from technical specialists where appropriate; contact details for both staff were made publically available. We responded to all comments in a timely manner and, where appropriate, arranged meetings to discuss any concerns face-to-face.

SP=EED	LEVEL ACHIEVED	EXAMPLES OF HOW RES HAS ACHIEVED THIS
INCLUSIVE AND REACHING OUT	Level 1 - Dissemination of information is designed to reach all potentially interested parties.	RES provided the opportunity to access the information in alternative formats such as Braille, large text and audio. We used a variety of mediums including newsletters, letters, press releases and a website to communicate information about the project and the consultation process. The public exhibitions were held in venues that were accessible to everyone in the community and were deliberately arranged to avoid the school holidays.
REPRESENTATIVE	Level 2 - The consultation process will be representative of the person likely to be affected by the plan or proposal.	RES identified key stakeholders and asked The Highland Council for a list of stakeholders with whom to engage with.
MONITORING AND EVALUATION	Level 1 - There will be monitoring of the information distribution. This information is analysed and influences later stages or exercises.	This PAC report fulfils this requirement by documenting the consultation process that has been undertaken and providing a summary of the comments received.
LEARNING AND SHARING	Level 2 - the lessons from the community engagement experience will be reviewed and shared with others.	RES will internally review the community consultation process undertaken for the proposed development and use this to influence future developments.

7.0 COMMENTS AND FEEDBACK

Below is a summary of the comments received. A number of the comments received relate to work that is carried out as part of the Environmental Impact Assessment (EIA) process, as set out in the Town and Country Planning (Environmental Impact Assessment) (Scotland) Regulations 2011. This document accompanies the Environmental Statement a summary in response to the issue raised is given below and the reference to the relevant chapter of the Environment Statement is given for further clarity. The below focuses on comments that are relevant to the planning process, a summary of other comments on the proposed development can be found in **Section 9.0**.

TOPIC	COMMENT RECEIVED	RES RESPONSE
Hydrology	<p>The owners of two properties were concerned about the potential hydrological impact of the development and requested further information from RES.</p>	<p>The Environmental Impact Assessment (EIA) regulations require that any areas hydrologically connected to the proposed Culachy Wind Farm site boundary are included within the EIA. Within the hydrological study area private water supplies have been identified and the potential effect of the construction and operation of Culachy Wind Farm was assessed.</p> <p>This hydrological search area is defined by mapping catchments and sub-catchments that could potentially be influenced by any works taking place within the development boundary for Culachy Wind Farm. Although the properties in question did not have catchments or sub-catchments within the development boundary, RES included the private water supply in the scope of assessment. The assessment showed that the development would not impact on the quality or quantity of the water supply. RES met with the residents and a hydrologist to discuss the assessments undertaken and present the results.</p>
Landscape	<p>At the first exhibition a number of attendees made comments on the layout of the initial proposed wind farm and were concerned about the views of the turbines from Fort Augustus and the A82.</p>	<p>When designing a wind farm RES spends a lot of time studying the area and mapping out the various constraints. The final layout proposed for Culachy Wind Farm takes into account wind speed, national designations, microwave links, hydrological, ecological and archaeological features, ornithological considerations, technical and engineering considerations and landscape.</p> <p>The overall design aim was to achieve reduced landscape and visual effects while achieving an appropriate landscape fit, and avoiding areas constrained by other environmental considerations such as ecology, hydrology and archaeology while maximising potential electricity generation.</p> <p>Our initial site investigations considered a development of 25 turbines. As a result of consultation, RES extensively redesigned Culachy Wind Farm making major changes to the number, height and locations of the proposed turbines. The final turbine layout of 13 turbines represents the optimal design when balancing the baseline environmental data, technical and engineering considerations; furthermore, this preferred layout also takes cognisance of the feedback received from the local community, stakeholders and consultees throughout the consultation process.</p> <p>The current layout addresses the comments received, and has reduced (and removed in some instances) the potential visibility from areas of interest in Fort Augustus and A82.</p> <p>Further information can be found in Volume 2: Environmental Statement Chapter 3: Design Evolution and Alternatives and Chapter 4: Landscape and Visual</p>
Traffic and Access	<p>A couple of exhibition attendees were concerned over the traffic and access arrangements for Culachy Wind Farm.</p>	<p>The majority of traffic generated by the wind farm proposal would be limited to vehicle movements during the construction and decommissioning phases. During the operation of the wind farm, traffic would be minimal as much of the operation of the wind farm would be automatic and monitored remotely. Construction traffic falls into three broad categories namely Abnormal Indivisible Loads, Heavy Goods Vehicles and Light Goods Vehicles. It is expected that the turbine components will be imported by sea before being delivered to site by road. The most likely port of entry for components would be Kyle of Lochalsh. Road alignments and limited storage space at this location means components would likely be delivered to and stored at Broadford Aerodrome on Skye before being transported along the A87 through Bun Loyne before joining the northbound A82 at Invergarry and then turning right onto Ardachy Road (U1667) for a short distance to the site entrance.</p> <p>The construction traffic flows (predominantly light and heavy goods vehicles although also including cars) would have no discernible impact upon the A82 and construction traffic is expected to result in impacts of only slight significance on Ardachy Road. Nevertheless, mitigation is proposed in the form of a Transport Management Plan to be agreed in advance of the construction phase with both the Highland Council and Transport</p>

TOPIC	COMMENT RECEIVED	RES RESPONSE
		<p>Scotland.</p> <p>Improvements such as minor widening are proposed to allow large vehicles to safely pass along Ardachy Road whilst elsewhere along the route works are likely to be limited to the temporary removal/relocation of street furniture.</p> <p>Further information can be found in, Volume 2: Environmental Statement Chapter 10 : Transport and Traffic</p>
Tourism	<p>A number of exhibition attendees were concerned about the impact of Culachy Wind Farm on tourism in the area.</p>	<p>RES has considered the effects of Calachy Wind Farm in relation to tourism. The effect that the changes in views would have on tourism, recreation and amenity value would partly depend on the personal opinion of the viewer. This is purely subjective; some people may have an aversion to wind turbines and others may view them as a complement to the landscape.</p> <p>RES has made significant changes to Culachy Wind Farm through the development process, reducing the number of turbines from 25 to 13. Through this process RES has addressed the comments received, and reduced (and removed in some instances) the potential visibility from areas of interest in Fort Augustus, the Great Glen and Loch Ness. The wind farm is not considered to have a significant effect on these areas.</p> <p>In addition to the Moffat Report 2008, further studies into tourist attitudes to wind farms such as the recent report by the James Hutton Institute on behalf of ClimateXchange ‘The Impact of Wind Farms on Scottish Tourism’, the findings of the 2012 Scottish Parliament’s Economy, Energy and Tourism Committee, VisitScotland’s 2011 Wind Farm Consumer Research and the 2013 YouGov Poll undertaken by Scottish Renewables all demonstrate that wind farms do not have an adverse impact on tourism in Scotland.</p> <p>Further information can be found in Volume 2: Environmental Statement Chapter 4: Landscape and Visual and Chapter 5: Cultural Heritage</p>
Potential Extension	<p>A couple of exhibition attendees queries why the site boundary was very large and were concerned that RES would seek to increase the number of turbines on the site in the future.</p>	<p>The site boundary not only includes the land that the turbines are on, but is also includes the access track and any associated infrastructure. The areas within the site boundary which don’t contain any turbines, have been proposed as habitat management areas which will restore and enhance key habitats on the development site, including blanket bog and wet heath. This would also benefit bird species, such as golden eagle and ground nesting waders.</p> <p>Further information can be found in Volume 4: Technical Appendix 7.8 Outline Habitat Management Plan</p>
Cultural Heritage	<p>One resident was concerned about the impact of Culachy Wind Farm on the Corrieyairack Pass</p>	<p>RES has undertaken a cultural heritage assessment which considered potential impacts of the proposed Culachy Wind Farm upon the physical fabric of heritage assets within the site, and potential impacts on the settings of assets within the wider landscape. This assessment included the Corrieyairack Pass. The upgrade to the Beauly-Denny Transmission Line runs through the wind farm site and adjacent to the Corrieyairack Pass, in designing the site RES has ensure that transmission line has been used as a natural barrier in the design of the wind farm.</p> <p>Further information can be found in Volume 2: Environmental Statement, Chapter 5: Cultural Heritage</p>
Community Benefit	<p>Local residents asked about the community benefit from Cairn Duhie Wind Farm.</p>	<p>RES is proposing a community fund of £2,000 per installed megawatt. In addition, RES will be making an extra £3,000 per installed megawatt available through its innovative Local Electricity Discount Scheme (LEDS). LEDS offers an annual discount of £200 to the electricity bills of those properties closest to a proposed RES wind farm. The scheme is open to all residential, business and community buildings (including schools, places of worship and village halls) within a qualifying area for the operational lifetime of the wind farm, with the discount being paid directly to the electricity supplier. Participation in the scheme is voluntary and does not require any change of electricity supplier or tariff. As a fixed amount (index linked), rather than a percentage of electricity bills, LEDS does not reward higher electricity users over lower users or encourage energy profligacy. This will make the total contribution to community benefit £5,000 per installed megawatt.</p> <p>It is important to note that the offer of community benefit will not affect the decision to grant planning permission for the project as it is not a planning matter.</p>

TOPIC	COMMENT RECEIVED	RES RESPONSE
Cumulative Impact	Several local residents had concerns over the potential cumulative impacts of the proposed wind farm development with other wind farms in the area.	The closest wind farms to the proposed wind farm are Millenium Wind Farm (consented), Millenium South (at planning application stage) and Stronelaig (consented). There would be some cumulative landscape and visual impacts arising from the proposed wind farm. Cumulative landscape impacts are an important consideration, and these are assessed in detail in Volume 2: Environmental Statement, Chapter 4: Landscape and Visual
Carbon Saving	One resident asked for information on the carbon dioxide savings from the wind farm.	<p>A full life cycle assessment of carbon losses and gains throughout the wind farm manufacture, construction and operation was undertaken using the Scottish Government Carbon Calculator for Wind Farms on Peatlands. Results indicated that the carbon payback time, compared to a fossil fuel mix of electricity generation, is an estimated 1.6 years.</p> <p>Further information can be found in Volume2: Environmental Statement, Chapter 2 Proposed Development and Volume 4: Technical Appendix 8.6: Carbon Balance</p>
Grid Connection	A number of exhibition attendees asked about the location of the grid connection for Culachy Wind Farm.	<p>The most likely grid connection point would be the Auchterawe Substation, southwest of Fort Augustus. The route would be subject to a separate application by the relevant network operator (Scottish and Southern Hydro Electric Transmission) under the Electricity Act 1989 after further detailed surveys and assessments.</p> <p>Further information can be found in</p>

8.0 SUMMARY

In accordance with The Planning etc. (Scotland) Act 2006, Regulation 7, we have fulfilled and exceeded the minimum statutory consultation activity. RES has documented and reported on the consultation activities undertaken. In addition, we have reviewed the consultation activities (Section 6.0) in line with 10 National Standards for Community Engagement as set out in PAN 3/2010 and SP=EED (Scottish Planning = Effective Engagement and Delivery).

Where appropriate we have responded directly to comments raised or directed people to the relevant information provided during the consultation or independent sources. Section 7.0 sets out the comments received and how we have responded to the comments. RES initially proposed a 25-turbine project at Culachy, as a result of comments received during the consultation process RES has redesigned the wind farm. This has seen changes to the proposed number, location and size of the turbines. RES values community involvement, as we believe it plays an important part in shaping the plans for our projects.

We have engaged early with the local community to facilitate a constructive consultation process; this has helped us understand and address any concerns as the project developed. Through the consultation process, we have helped the community in understanding the benefits and impacts of the proposed wind farm and added value and improved the quality of our proposal through meaningful and productive consultation. The consultation process has resulted in a high quality development proposal that we hope the local community will largely support in their area.

9.0 APPENDICES

- Stakeholder Information Evening Invitation
- Newsletter - March 2014
- Newsletter - October 2014
- Exhibition 1 (March 2014) - Newspaper Advert
- Exhibition 2 (October 2014) - Newspaper Advert
- Exhibition 1 (March 2014) Questionnaire
- Exhibition 2 (October 2014) Questionnaire
- Analysis of Exhibition Questionnaires (March 2014)
- Analysis of Exhibition Questionnaires (October 2014)
- Summary of Comments from Exhibition Questionnaires - March 2014
- Summary of Comments from Exhibition Questionnaires - October 2014

Stakeholder Information Meeting Invitation



RES UK & Ireland Limited
3rd Floor, STV, Pacific Quay
Glasgow G51 1PQ, United Kingdom
T +44 (0)141 404 5500 F +44 (0)141 404 5501
E info@res-group.com www.res-group.com

[REDACTED]
South Loch Ness Access Group
[REDACTED]
[REDACTED]
[REDACTED]
[REDACTED]

Our Ref: 03001-000579

19 November 2013

Dear [REDACTED],

Culachy Wind Farm

RES, one of the UK's leading renewable energy companies with over 30 years experience in wind energy development, is investigating the potential for a wind farm at the Culachy Estate, to the east of the A82 between Invergarry and Fort Augustus.

Our initial site investigations are exploring the potential for 25 turbines, and we will shortly be scoping the project with the Scottish Government Energy Consents and Deployment Unit. The scoping process sets out a preliminary project design and identifies the various environmental studies that will be carried out to support the planning application. Over the coming weeks we will also be applying to The Highland Council for permission to install a meteorological mast on the site to provide us with further data on wind speeds and directions.

We are very keen to meet with community representatives and organisations at an early stage to introduce ourselves, provide you with information about the project and the benefits it could bring to the local area, and discuss with you our plans for consulting with the wider community. At this early stage we would like to invite two representatives from South Loch Ness Access Group to meet with RES, the Culachy Estate, other community representatives and organisations at 7pm on Monday 9th December at The Lovat Hotel, Fort Augustus. Please RSVP by 2nd December to culachy.windfarm@res-ltd.com.

We are keen to state that we have not submitted a planning application for the wind farm, and are very much in the early pre-application stage. Following the scoping request and application for the mast, we will begin a comprehensive programme of public consultation. In early 2014, we will issue newsletters to invite local people and interested parties to a public exhibition to view and comment on our proposals. A project website will be set up to inform the local community of the proposal and planning application for the wind farm as the project progresses.

RES values community involvement, as we believe it plays an important part in shaping the plans for our projects. We are keen to involve as many people as possible in our consultation process, and we look forward to meeting you on Monday 9th December.

Kind Regards



Rachel Anderson
Regional Head of Comms
E rachel.anderson@res-ltd.com
T +44 (0)141 404 5531



RES UK & Ireland Limited
3rd Floor, STV, Pacific Quay
Glasgow G51 1PQ, United Kingdom
T +44 (0)141 404 5500 F +44 (0)141 404 5501
E info@res-group.com www.res-group.com

Address 1
Address 2
Address 3
Address 4
Address 5

Our Ref: 03001-000972

26 February 2014

Dear Sir/Madam,

Invitation to the Culachy Wind Farm Public Exhibition

RES, one of Scotland's leading independent renewable energy companies, is starting a consultation process for its proposed Culachy Wind Farm on the Culachy Estate near Fort Augustus. Our initial site investigations are exploring the potential for 25 turbines, and a map of the site location can be viewed overleaf along with some initial project information.

We have arranged a public exhibition to share and discuss our proposal with as many people as possible at this early stage. We would like to invite you to the following drop-in event to ensure you are fully informed:

Date: Tuesday 18th March 2014

Time: 3pm – 7pm

Venue: Fort Augustus Village Hall, Church Rd, Fort Augustus, PH32 4DG

Members of the RES project team will be on hand to provide information about the proposed Culachy Wind Farm and answer any questions that you may have. This exhibition marks the start of RES' consultation process on Culachy Wind Farm and further exhibitions will be held during 2014.

RES values community involvement, as we believe it plays an important part in shaping the plans for our projects. We look forward to working with local residents, community organisations and businesses at this early stage.

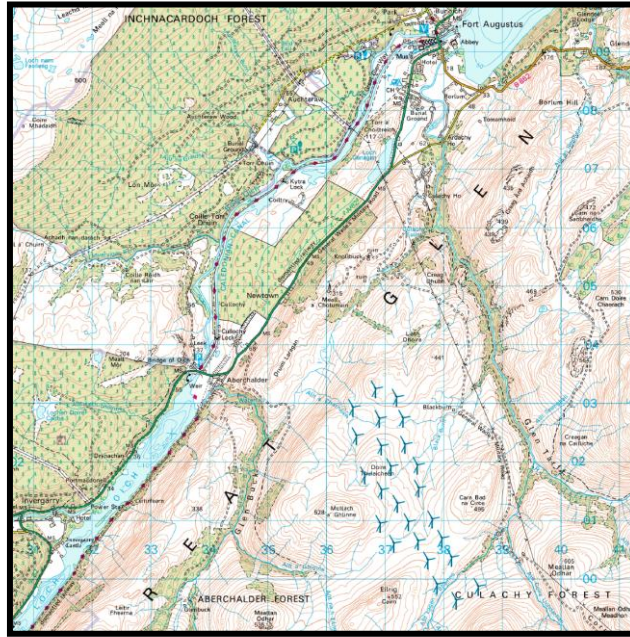
We hope to see you during the exhibition. In the meantime if you have any questions please feel free to contact us using the details below.

Yours faithfully,

██████████
██████████
████████████████████
████████████████████

KEY FACTS

Indicative location of the proposed Culachy Wind Farm



© Crown copyright, All rights reserved. 2014 Licence number 0100031673

Culachy Wind Farm

RES is investigating the potential for 25 turbines, with a maximum height to tip of 135 metres. The project is expected to be over 50 megawatts (MW) in size, and RES is currently undertaking a scoping process with the Scottish Government to identify the various environmental and technical studies that will be carried out to support a potential planning application. A dedicated project website, giving regular updates about the project, will go live on 19th March 2014: www.culachy-windfarm.co.uk

How could the community benefit from Culachy Wind Farm?

RES anticipates that, based on 25 turbines, Culachy Wind Farm could put more than £6.9 million into the local economy during construction and the first year of operation. Over its operational lifetime, Culachy Wind Farm has the potential to bring over £9.3 Million in community benefits.

RES' Community Benefits Package will see £5,000 per installed megawatt available for the local community split between a Community Benefit Fund and RES' innovative Local Electricity Discount Scheme (LEDS). Under the LEDS initiative those residential, community and business properties closest to Culachy Wind Farm will become eligible for a minimum discount of £100 per year off their electricity bills – paid directly to their electricity supplier without the need to change supplier or sign up to a particular tariff.

About RES

RES is one of the world's leading renewable energy developers, a privately owned British company with a proud history in Scotland. Employing over 100 staff in Scotland, RES has over 30 years' experience of developing, constructing and operating projects of outstanding quality.

RES actively contributes to the Highlands economy. RES developed and gained consent for Dunmaglass Wind Farm in the Monadhliath Mountains and recently finished a series of road improvements in conjunction with the project along the B851, which have provided a positive legacy for the local community. Using Highlands based civil contractor R J McLeod, RES used the wealth of local civil engineering expertise and ensured the economic benefits remained in the region.

CULACHY WIND FARM

Newsletter 2 – October 2014



Welcome to the second newsletter from RES designed to keep the local community informed about our plans for the proposed Culachy Wind Farm.

MAJOR CHANGES TO PROPOSED WIND FARM

RES started consulting on its plans for a wind farm on the Culachy Estate, near Fort Augustus in late 2013. Our initial proposals were for a 25-turbine wind farm with an overall installed capacity of 75 megawatts (MW). We held a public exhibition earlier this year to present our plans to the local community. We have reviewed the comments made to us and as a result have comprehensively redesigned and scaled back the project - reducing the number of turbines from 25 to 13.

One of the main concerns raised during our extensive consultation process, was the views of the proposed Culachy Wind Farm from key areas of interest in Fort Augustus. RES reviewed the comments made by the community and as a result has made major changes to the number, height and locations of the proposed turbines. Crucially as a result of these changes there will be no visibility from key areas of interest in Fort Augustus.

Our revised proposals will mean that the project will be determined by The Highland Council, and we have recently submitted a Proposal of Application Notice to the council setting out how we will consult on our revised plans for Culachy Wind Farm.

You can download this and also find out more about the project at our website:

www.culachy-windfarm.co.uk

KEY FACTS

Location:

Culachy Estate, near Fort Augustus

Number of turbines:

13

Installed capacity:

Approximately 44 megawatts (MW)

PUBLIC EXHIBITION - Find out about the changes we've made

We would like to invite you to our next public exhibition to share with you the changes we have made to Culachy Wind Farm.

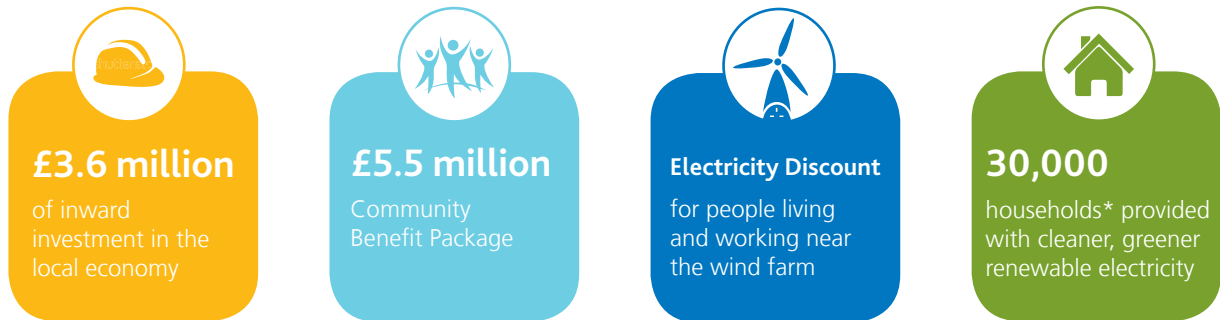
**Wednesday 22nd October, 3pm – 8pm,
Fort Augustus Village Hall**

We look forward to meeting you to discuss our proposal in more detail and answering any questions you may have.



THE BENEFITS OF CULACHY WIND FARM

RES estimates that the revised proposals for Culachy Wind Farm would still bring more than £3.6 million into the local economy during construction and the first year of operation. In addition, the community would be offered benefits of £5,000 per installed megawatt, made up of RES' innovative Local Electricity Discount Scheme (LEDS) and a Community Benefit Fund. Based on initial calculations, over its lifetime Culachy Wind Farm has the potential to provide £5.5 million in benefits directly to the closest Highland communities.

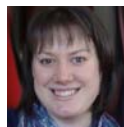


ABOUT RES

RES, a privately owned British company with a proud history in Scotland, is one of the world's leading renewable energy developers. RES has developed and/or built more than 8,000 MW of wind capacity worldwide. In the UK alone, RES currently has more than 1,000 MW of wind energy projects either constructed, under construction or consented. Employing over 100 staff in Scotland, RES has over 30 years' experience of developing, constructing and operating projects of outstanding quality.

RES actively contributes to the Highlands economy, most recently RES gained consent for Dunmaglass Wind Farm in the Monadhliath Mountains and in 2013 finished a series of road improvements in conjunction with the project along the B851, which have provided a positive legacy for the local community. Using Highlands based civil contractor R J McLeod, RES used the wealth of local civil engineering expertise and ensured the economic benefits remained in the region.

ANY QUESTIONS?



Rachel Anderson

Regional Communications Manager

E rachel.anderson@res-ltd.com T 0141 404 5531

RES, Third Floor STV, Pacific Quay, Glasgow, G51 1PQ

*The homes equivalent has been calculated by taking the predicted annual electricity generation of the site (based on RES studies Culachy Wind Farm has a predicted capacity factor of 33.9%) and dividing this by the annual average electricity consumption figures from the Department of Energy and Climate Change 2012 (4229kWh).

In accordance with Town and Country Planning (Development Management Procedure) Scotland regulations 2008, Pre-Applications Consultation 7(2). Any persons wishing to submit comments can do so either in writing or by email to: Rachel Anderson, RES, Third Floor STV, Pacific Quay, Glasgow G51 1PQ or rachel.anderson@res-ltd.com. The closing date for the submission of comments is 19th November 2014. Persons submitting comments in response to the Pre-Application Consultation are advised that comments submitted to RES at this time are not representations to the planning authority (The Highland Council); there will be an opportunity to submit representations to the planning authority should a planning application be made.

If you require information in Braille, large text or audio, please let us know.
For those receiving this newsletter by post, we obtained your address through a national postcode database.
If you do not wish to receive more information from us about this proposal, please write to us and let us know.

Exhibition 1 (March 2014) - Newspaper Advert

CULACHY WIND FARM

Public Exhibition

RES invites local people interested in learning about its proposal for Culachy Wind Farm located near Fort Augustus, to come along to the following public exhibition:

Tuesday 18th March 2014
3pm – 7pm
Fort Augustus Village Hall

An opportunity to meet RES staff, ask questions and find out more about the proposed project.

For more information, please contact:

RACHEL ANDERSON
0141 404 5531
rachel.anderson@res-ltd.com
www.culachy-windfarm.co.uk

res
power for good

Exhibition 2 (October 2014) - Newspaper Advert

CULACHY WIND FARM

Public Exhibition

RES invites local people interested in learning about the changes to its proposed Culachy Wind Farm located near Fort Augustus, to come along to the following public exhibition:

Wednesday 22nd October 2014

3pm – 8pm

Fort Augustus Village Hall

An opportunity to meet RES staff, ask questions and find out more about the proposed 13 turbine project.

In accordance with Town and Country Planning (Development Management Procedure) Scotland regulations 2008, Pre-Applications Consultation 7(2). Any persons wishing to submit comments can do so either in writing or by email to: Rachel Anderson, RES, Third Floor STV, Pacific Quay, Glasgow G51 1PQ or rachel.anderson@res-ltd.com. The closing date for the submission of comments is 19th November 2014. Persons submitting comments in response to the Pre-Application Consultation are advised that comments submitted to RES at this time are not representations to the planning authority (The Highland Council); there will be an opportunity to submit representations to the planning authority should a planning application be made.

For more information, please contact:

RACHEL ANDERSON
0141 404 5531
rachel.anderson@res-ltd.com
www.culachy-windfarm.co.uk

res
power for good

Exhibition 1 (March 2014) - Questionnaire

RES believes in meaningful and productive consultation with the communities around our wind farm developments. We are keen to hear your views on our proposed Culachy Wind Farm. We would appreciate it if you would take a minute to provide us with some feedback.

1. How did you find out about the exhibition?

- Letter through the door
- Advert in Inverness Courier
- Website: www.culachy-windfarm.co.uk
- Poster (please specify location) _____
- Other (please specify) _____

2. Before coming to the public exhibition how would you describe your knowledge of the proposed Culachy Wind Farm?

- Know a lot
- Know quite a lot
- Know a little
- Know very little
- Know nothing at all

3. Having attended this exhibition, to what extent do you feel we have increased your understanding and information about the proposed Culachy Wind Farm?

- A lot
- Quite a lot
- A little
- Very little
- Not at all

4. Which part of the exhibition did you find most useful today?

- The information boards
- The photomontages
- The ability to ask RES questions and provide feedback directly to the project team
- Other (please specify) _____

5. What do you think about the layout for Culachy Wind Farm?

- I am happy with proposed layout
- I am neutral towards to the current proposed layout
- I have concerns about proposed layout (please suggest any changes to the layout below)
- I don't like wind farms in general

Layout comments: _____

6. Additional Comments:

If you would like to be kept informed about the proposed Culachy Wind Farm or have left a comment that you would like RES to contact you about, please leave your details here:

Name: _____

Email: _____

Address: _____

Thank you for taking the time to fill out this questionnaire. Your feedback is important to us.

Exhibition 2 (October 2014) - Questionnaire

RES believes in meaningful and productive consultation with the communities around our wind farm developments. We are keen to hear your views on our revised proposals for Culachy Wind Farm. We would appreciate it if you would take a minute to provide us with some feedback.

1. How did you find out about the exhibition?

- Newsletter through the door
- Inverness Courier Advert
- Press and Journal Advert
- Website: www.culachy-windfarm.co.uk
- Other (please specify) _____

2. Before coming to the public exhibition how would you describe your knowledge of the proposed Culachy Wind Farm?

- Know a lot
- Know quite a lot
- Know a little
- Know very little
- Know nothing at all

3. Having attended this exhibition, to what extent do you feel we have increased your understanding and information about the proposed Culachy Wind Farm?

- A lot
- Quite a lot
- A little
- Very little
- Not at all

4. Which part of the exhibition did you find most useful today?

- The information boards
- The photomontages
- The ability to ask questions and provide feedback directly to the project team
- Other (please specify) _____



5. What do you think about the revised proposed for Culachy Wind Farm?

- I am happy with the revised layout
- I am neutral towards to the revised layout
- I have concerns about the revised layout (*please suggest any changes to the layout below*)
- I don't like wind farms in general

Layout comments: _____

6. Additional Comments:

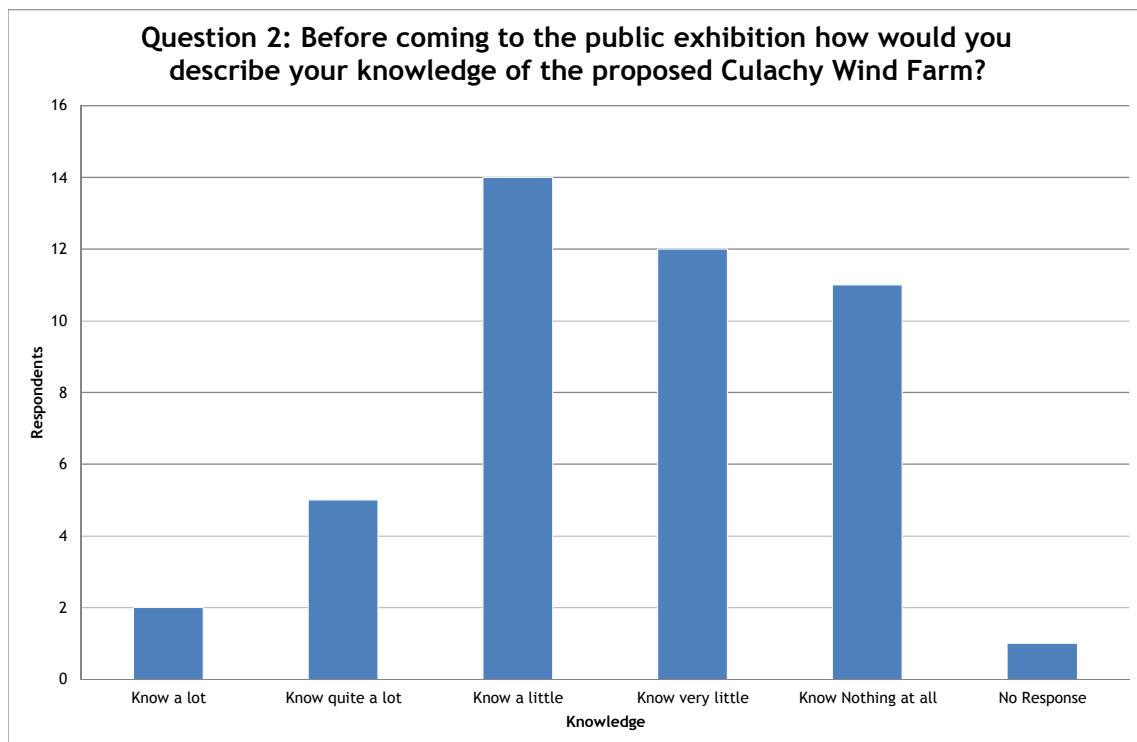
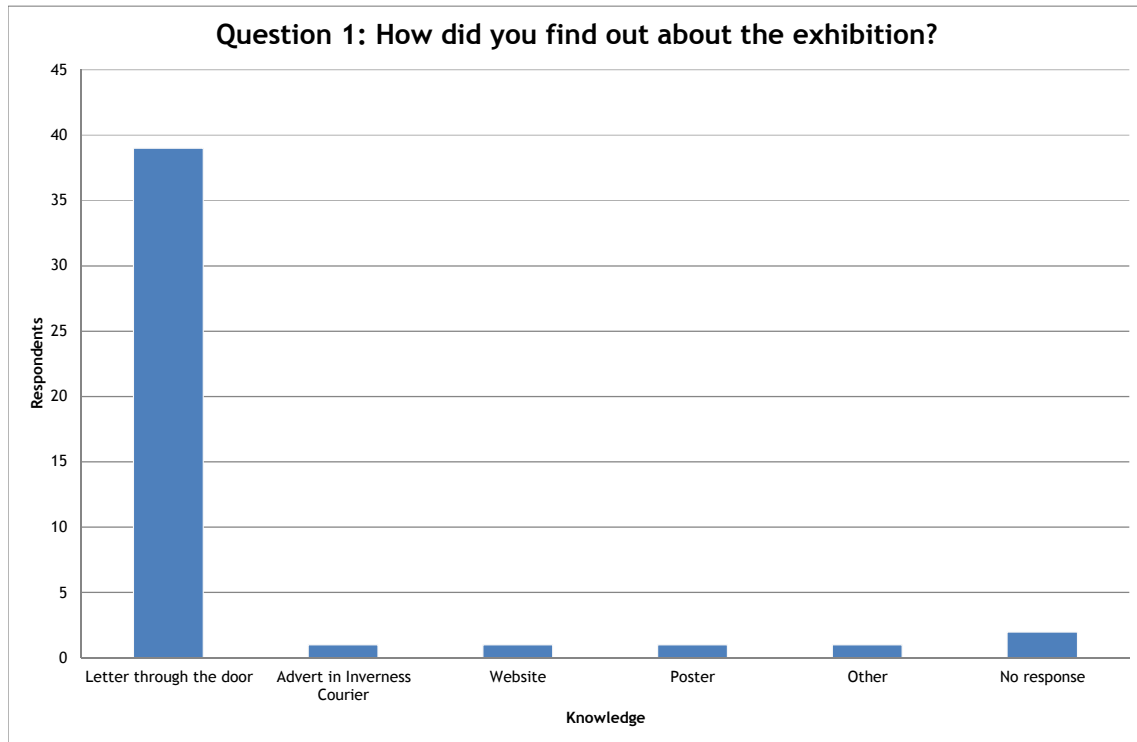
If you would like to be kept informed about the proposed Culachy Wind Farm or have left a comment that you would like RES to contact you about, please leave your details here:

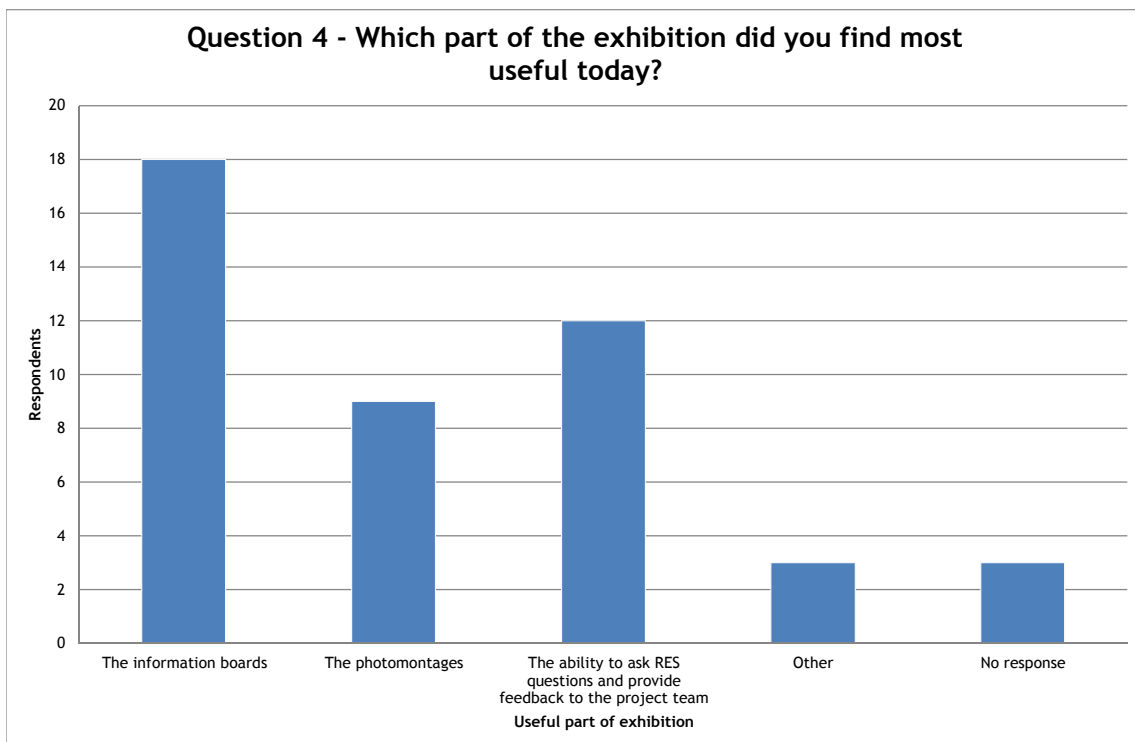
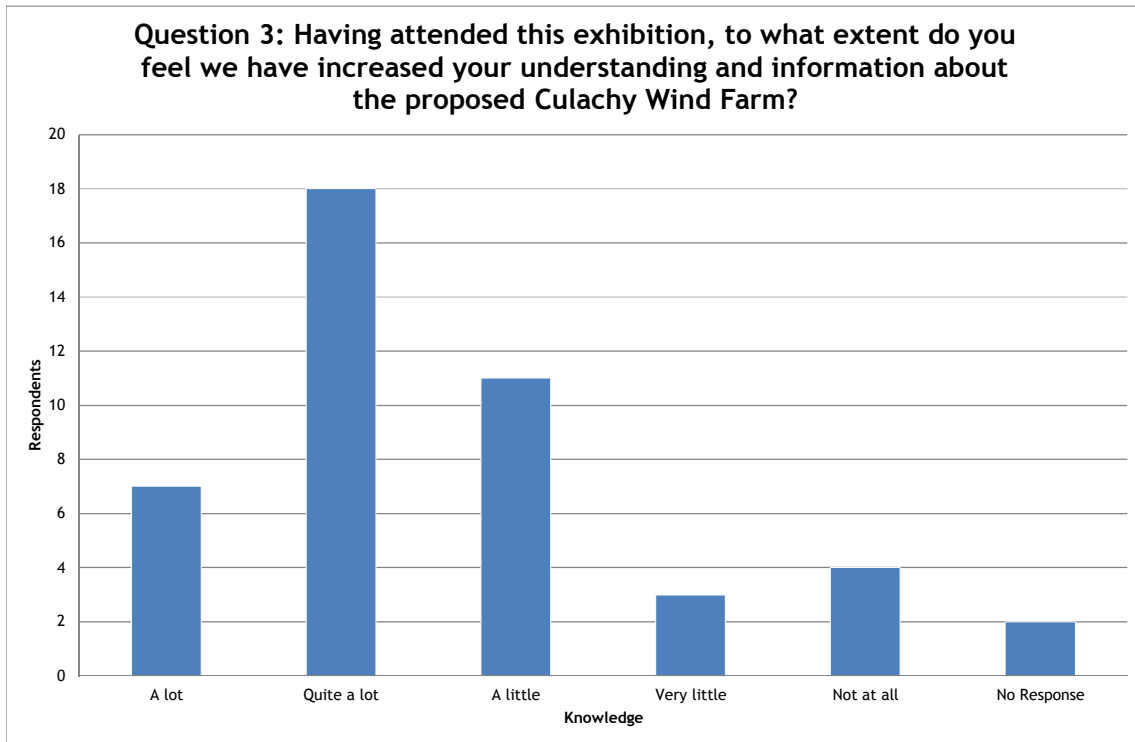
Name: _____
Email: _____
Address: _____

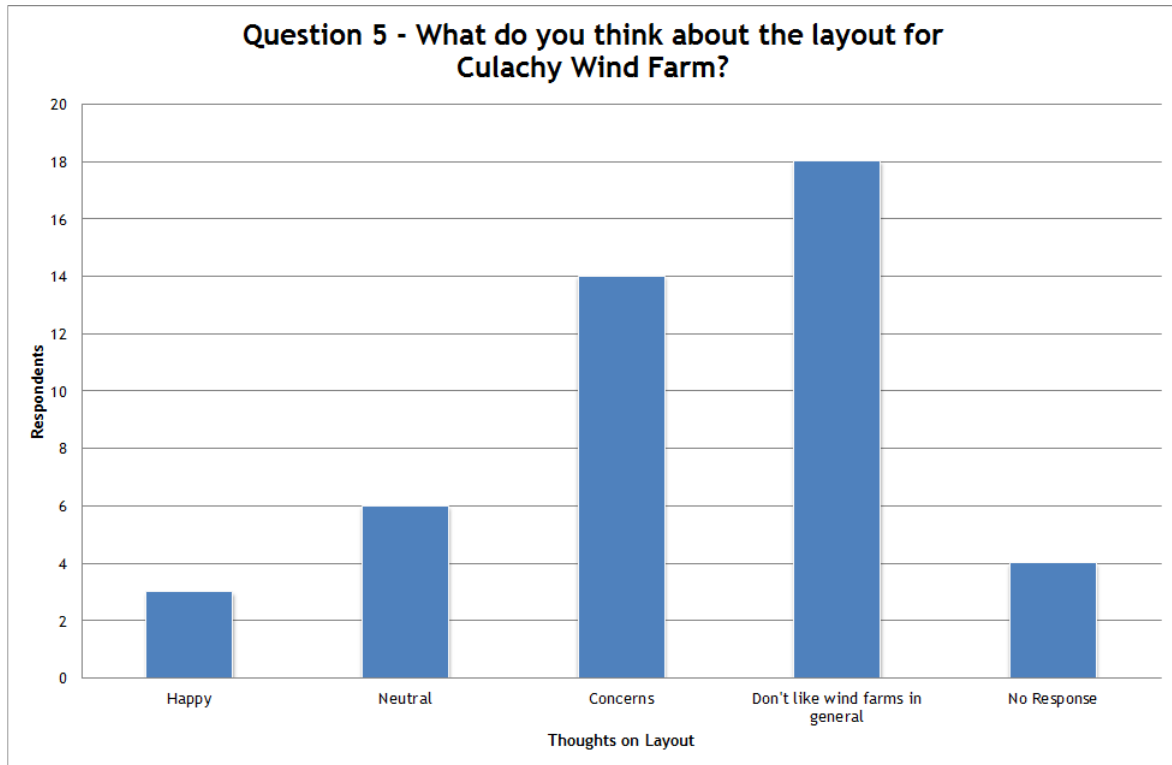
In accordance with Town and Country Planning (Development Management Procedure) Scotland regulations 2008, Pre-Applications Consultation 7(2). Any persons wishing to submit comments can do so either in writing or by email to: Rachel Anderson, RES, Third Floor STV, Pacific Quay, Glasgow G51 1PQ or rachel.anderson@res-ltd.com. The closing date for the submission of comments is 19th November 2014. Persons submitting comments in response to the Pre-Application Consultation are advised that comments submitted to RES at this time are not representations to the planning authority (The Highland Council); there will be an opportunity to submit representations to the planning authority should a planning application be made.

Thank you for taking the time to fill out this questionnaire. Your feedback is important to us.

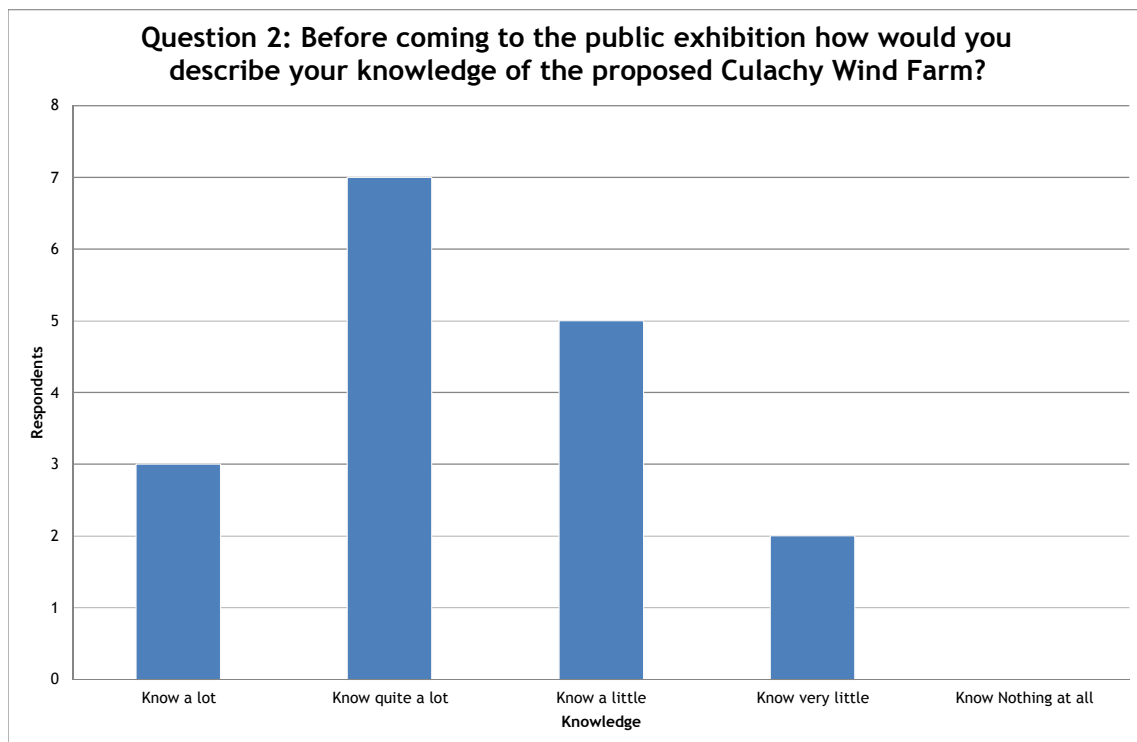
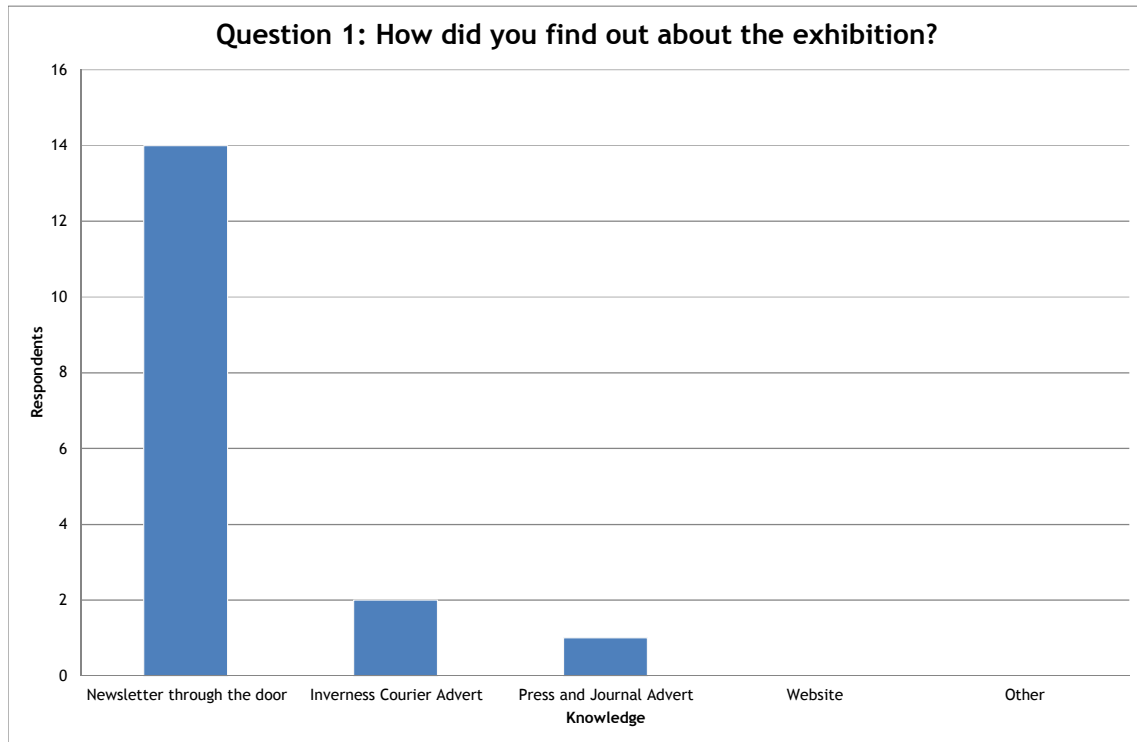
Analysis of Exhibition Questionnaires (March 2014)

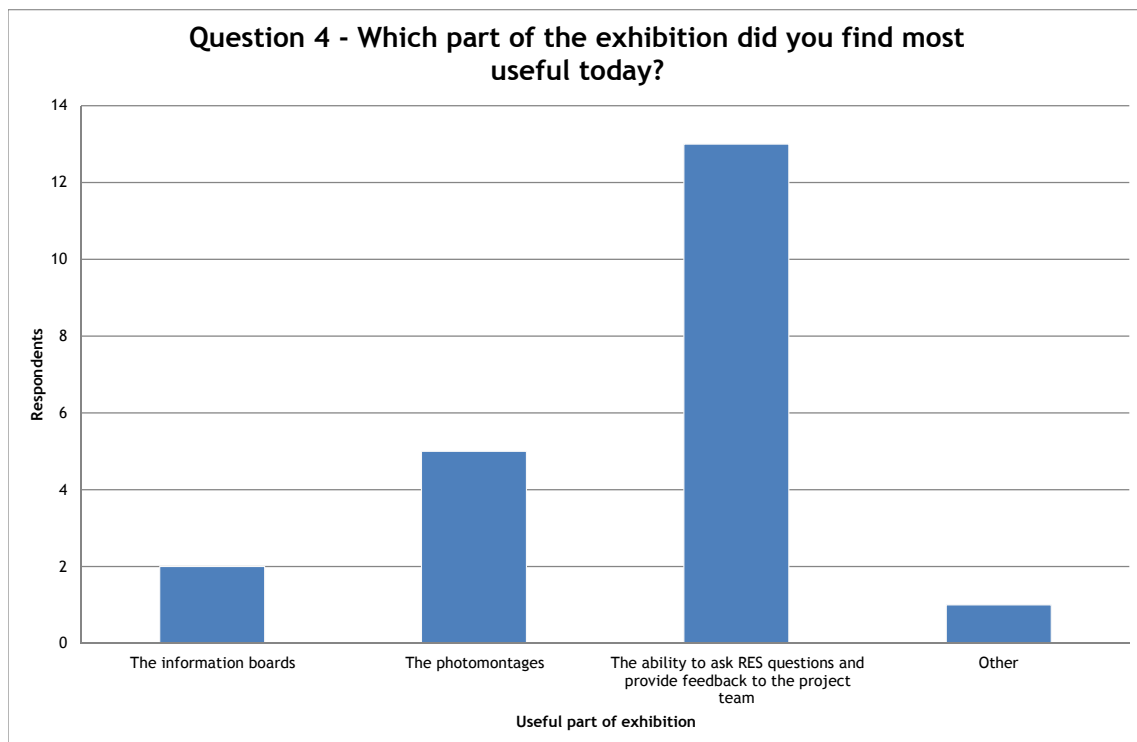
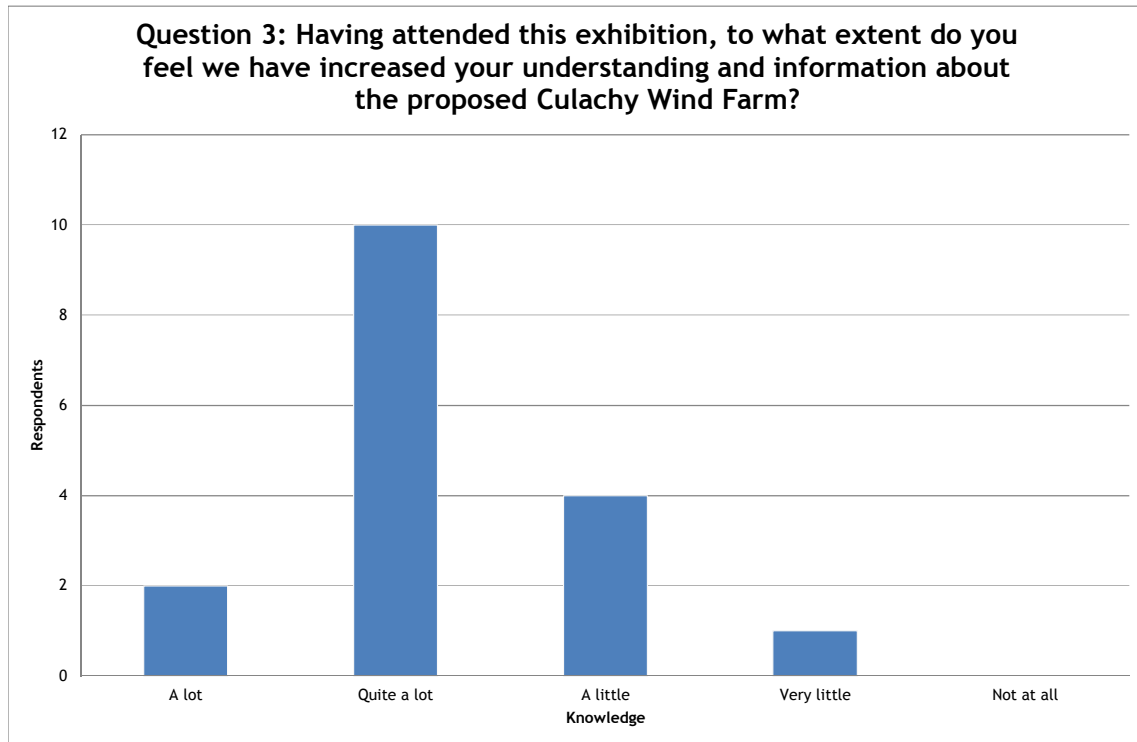


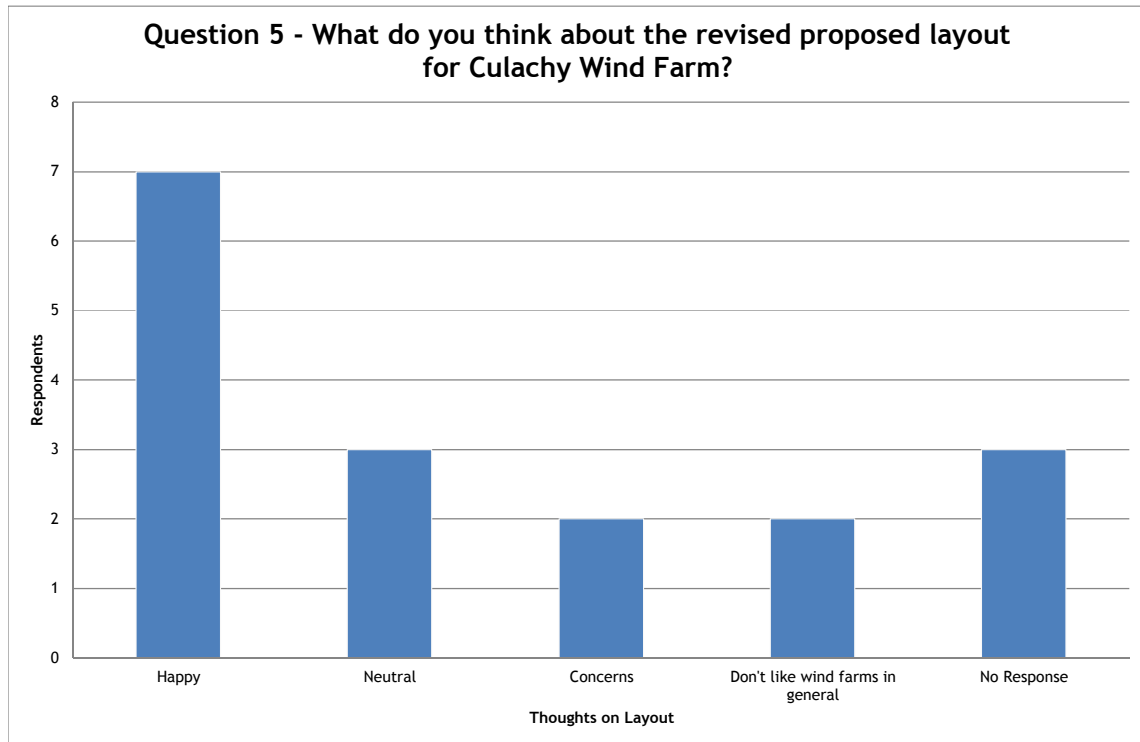




Analysis of Exhibition Questionnaires (October 2014)







Summary of Comments from Exhibition Questionnaires - March 2014

Question 5 - Please suggest any changes to the layout:

- If we are to benefit, as a village, by having electricity & getting some money - it is a good thing.
- We have too many renewable schemes in this area already.
- The proposed layout, while less intrusive than most current proposals will still be visible from Great Glen. The layout needs to be reviewed to minimise this.
- We have too many in local area. Corrieyarack is a famous walking route and historic monument. Views from all directions are being spoilt by too many windfarms.
- They are highly visible [sic] from the eastend [sic] of village and with further sites in the pipeline we could become surrounded by turbines.
- Need to move the nearest wind turbines which are very visible [sic] from Fort Augustus & put them at the back of the proposed site.
- Proposal seems very visible to Fort Augustus & quite a stretch of A82 - also Wade's Road up to the Corriearrick [sic] - a very well used hill track for private walkers & race events.
- Surprised turbines can be seen from Fort Augustus on photomontage. Will they also be seen from Loch Ness itself - eg. on boat trips??
- I don't think consideration of the area has been made in terms of current use and the needs of the locals [sic] population.
- Move it another 2/3 kms S.E and out of view. Seems to be enough space.
- Ruining our views & environment. Main reason for living in Fort Augustus. No more please stop!! Can you move the front 8 turbines further back so that hidden from the Fort Augustus Village.
- Far too big - too many windfarms in this area. Completely ruining our beautiful scenery and outstanding about [sic] will be seen for miles!!
- It will be an ugly scar on the skylines.
- Higher turbines will be too visible from millfield houses - and see below.
- This would be a terrible sight for the people of FA to endure.
- Shouldn't be there at all, there is no alternative.
- Not happy with the layout too visible [sic] should be moved further back to hide them from Jenheims Park and Auchteraw.
- How many windfarms are needed? Whos is going to get rich from this? Locals are going to get £100 off bill - big deal. Free electricity for all locals would be a better idea.
- I do not agree with the development of yet another windfarm.

Question 6 - Additional Comments:

- It is good if it will bring work for the local people. There is not a lot of work for locals here: a lot of people who have moved here will not like it as it will spoil there [sic] view.
- I live on North side of village, overlooking hills further South, where pylons are being erected each day - I do not find this intrusive & hope the Culachy Wind Farm will be able to go ahead.
- I feel that as the nearest resident is 4km away this project should go ahead.
- My only concern is my water supply that takes its source from the proposed site!
- I feel that Highland landscape has enough windfarms. I worry about the displacement of eroded peat bogs and large quantities of concrete required for the construction. Hydroelectric power seems more cost effective.
- All for wind farm if there is work for local people and also money put back into community.
- Have concerns about transport of equipment & our water supply being disrupted.
- We are not being provided with any full time jobs and we are being bought off with money too [sic] the 'community'. This community depends upon tourism - what do we do when the tourists don't want to come to our area because the views are all spoilt?
- Please provide tables without holes for completing questionnaires.
- Also, I can see that there is a large area mapped out. Do we expect more? No more please! We have enough here!

- I have reservations on a number of levels:
 - Visual impact
 - Impact on property value & market
 - Impact on economy/tourism
 - Health implications
 - Over development of scenic area
- The need for windfarms in Scotland is dubious. Scotland doesn't need the proposed power from your plan. There is no benefit to the local population, the only benefit is to power users elsewhere.
- Whilst I appreciated that wind farms are a good source of renewable energy - I do think that the local inhabitants should have a final say in the siting of the wind turbines (see layout comment). We do not want to be looking onto 6/8 turbines which will be highly visible [sic] from where we live and our guests in the B+B come for the beautiful scenery not to look at 135m HIGH turbines.
- Disappointed that it is so visible. Concerned about proposal for yet another windfarm in this area. Alarmed at the support, financial & other that the Government gives to wind farms - which are relatively short-term solutions.
- Concerns over tourism.
- Re. "cumulative sites" map - would be more accurate to show footprint of other windfarm sites in the area rather than "dots" and names of sites - existing map minimises actual density of turbines on both sides of the Great Glen.
- The problem is that there are already too many renewable energy schemes in the areas. We have passed the point at which the community can be adequately compensated.
- Dunmaglass is in current construction and of what I have seen so far does not fill me with confidence with proposals for Culachy.
- Is it not enough that we have bigger pylons going up. The village does not need this to be so close.
- I am against the subsidies and all wind farms development and a DEBT. NO other business is paid to operate and paid if the conditions are not favourable. HUGE NEGATIVE IMPACT on Environment.
- Totally [sic] against turbines, the environment is ruined already with what is about ie. Turbines + Pylons we do not need any more.
- Why spoil our landscape with these monstrosities which are inefficient. Tourism is not going to benefit as it will put people off coming etc. etc.
- Why not take your windfarms to where the power is needed ie. England. They are a BIG BLOT on our beautiful landscape.
- Wind turbines are carbon-neutral at best. Electricity generated over 25 years is more than cancelled out by the damage in construction (to the environment) Eg. CONCRETE!!! Permanent damage to vast area of peatbog (releasing CO emissions). Permanent damage to wildlife - and to Tourism.
- What happened to preserving wild land - will be invisible from large stretches of Carrarcyack [sic] Pass (historic monument/Wade's Road) - will completely spoil the landscape as will the [wording unclear] wind farm. Will also damage tourism of the area.
- Stop this proposal as there is no research that state the benefit for the environment and secondly, the Scottish people are paying dearly re. switch on & off of these monstrous things.
- Would you like to buy my house? I'm 600 yds from the substation at Auchteraw, I now have a view of 11 pylons on the hills & look forward to the wind turbines, NOT!! No consideration is given to residents, you are destroying our landscape & we are stuck here because no one wants to buy our properties. Let's hope you keep your word and come back to me regarding my comments.
- I think it is ruining the landscape and the minuses outweigh the benefits.
- We have a private water supply which we are concerned about...it comes off the hill and we are concerned about disruption or loss of supply.
- Our concerns are as much about the plans as are you going to use the Auchterawe [sic] substation which is subject to an ongoing dispute with residents.
- Yet another farm not required. Build it in England as they use the power that we provide - Lake District, Cotswolds, Anglia. Scotland is just as scenic as these areas but we bear the

-
- brunt. Someone is getting rich at the expense of the locals. What benefit is this to us. A huge impact on locals, farming, life in general. Another eyesore.
- Too many now being proposed. Noise from sub-station already very bad. We do not benefit from any of these schemes. What benefit would the community see? Free electricity would be a start! Devalued property prices.
 - Very much against this proposed site.
 - Please lower the turbines out of my view.
 - The information boards were misleading and did not show the cumulative impact of the proposed windfarm in relation to existing/planned other windfarms.
 - The photomontages only showed views where the impact of turbines was minimal. Not showed views where all the turbines could be seen. Using the A87 for delivery of turbines/material is inappropriate.
 - I am strongly opposed to the erection of further construction of any kind to the contour of the skyline. It seriously detracts from the beauty of The Great Glen.
 - Explain £100 in your contact sheet. Who is to receive this. Describe how this wind farm maybe seen from Fort Augustus. A contour layout would be helpful.

Summary of Comments from Exhibition Questionnaires - October 2014

Question 5 - Please suggest any changes to the layout:

- To [sic] many wind-turbines in the area.
- Too many wind farms around Fort Augustus.
- I am much happier with the proposed layout than with most - impact on residents and tourism has been effectively minimised - but remain concerned as a hill walked at cumulative impact.
- Much better than original layout.
- Adjacent to Aberchalder wf. Not shown or referred to on maps.
- Happier as a residents with the revised layout - but less so as walker - see below.
- The revised layout is a great improvement but won't go as far as to say 'happy' with it.
- Revised layout is an improvement.
- Because there are so many in this area.

Question 6: Additional Comments:

- Build off-shore.
- This area of the Highlands is fast becoming industrialised.
- Wireline from ground floor centre of house towards the wind farm look at forestry.
- I think wind farms are an important part of the energy mix and are also attractive, more so than most other forms of energy generation.
- Transformed from previous layout - very impressed.
- Staff well-informed & very helpful even though all the information request was unavailable at this event. However, have promised to send a CD.
- Main concern is the seeming saturation of proposed wind farms in the Great Glen and Monadhliath [sic] Mountains.
- Lisa very helpful and sensitive to our concerns.
- Too many wfs. Reduce density in conjunction with Aberchalder is still too much if approved.
- A path suitable for walkers, cyclists + horse riders linking the access track to the Correyariack [sic] would provide a long loop + encourage access to the hills. A path about 4 feet wide would be sufficient.
- Concerned that part of the site lies within an area of wild land as agreed on the wind land map between John Muir Trust and the Scottish EDU - renders the map pointless.
- Restored faith in company + process that notice was taken of community comments and action taken accordingly by the revised submission.
- Please that public exhibitions can make a difference to future plans.
- We seem overloaded with wind farms in this area.